

Endoca Certificate of Analysis:

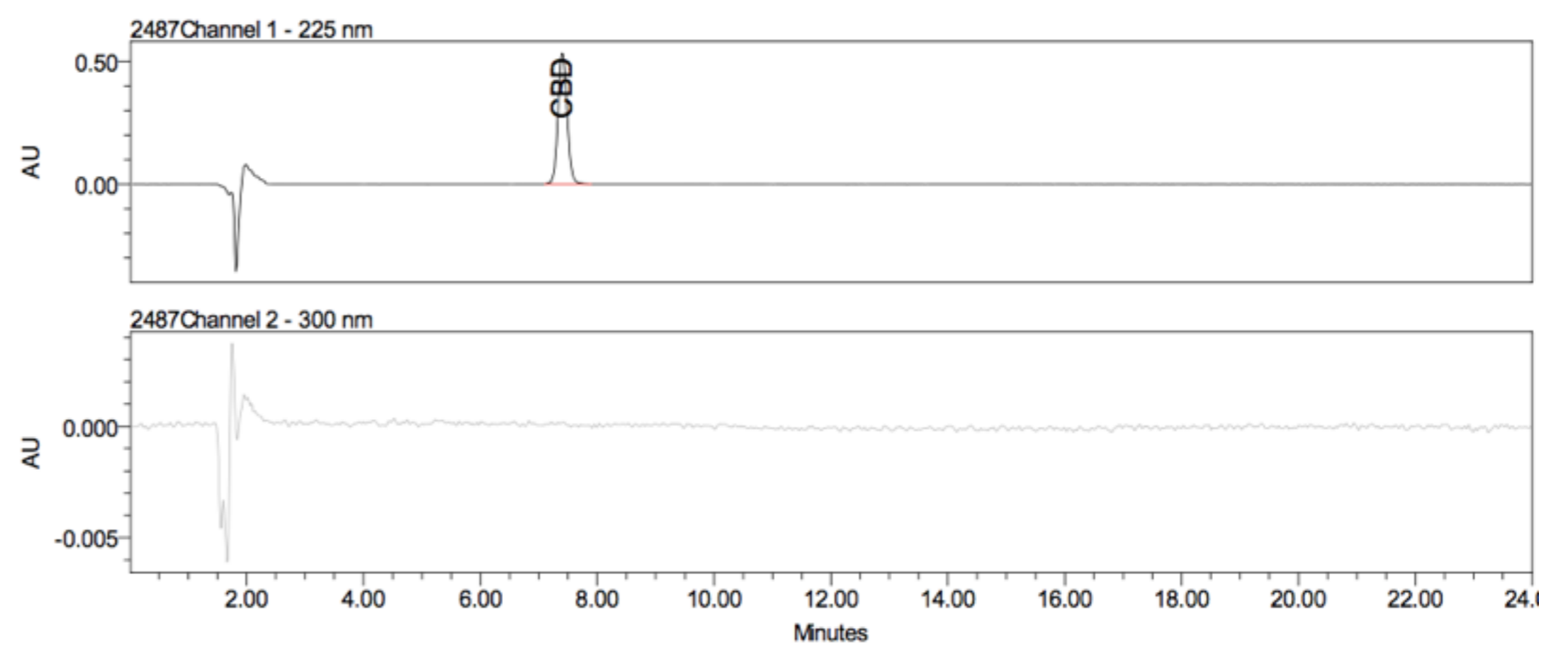
Endoca USA
 2305 Historic Decatur Rd San Diego USA
 Phone: +1-619-831-0156
 infousa@endoca.com
 www.endoca.com
 ISO 22000 certified
 HACCP certified; GMP certified

Responsible Supervisor: Martin V.
 Sample: Batch# 1142
 Date samples received: 23-October 2018
 Date analysis began: 23-October 2018
 Date sample report produced: 23-October 2018
 ID Number when available: _____
 Sample Mass: 1 g

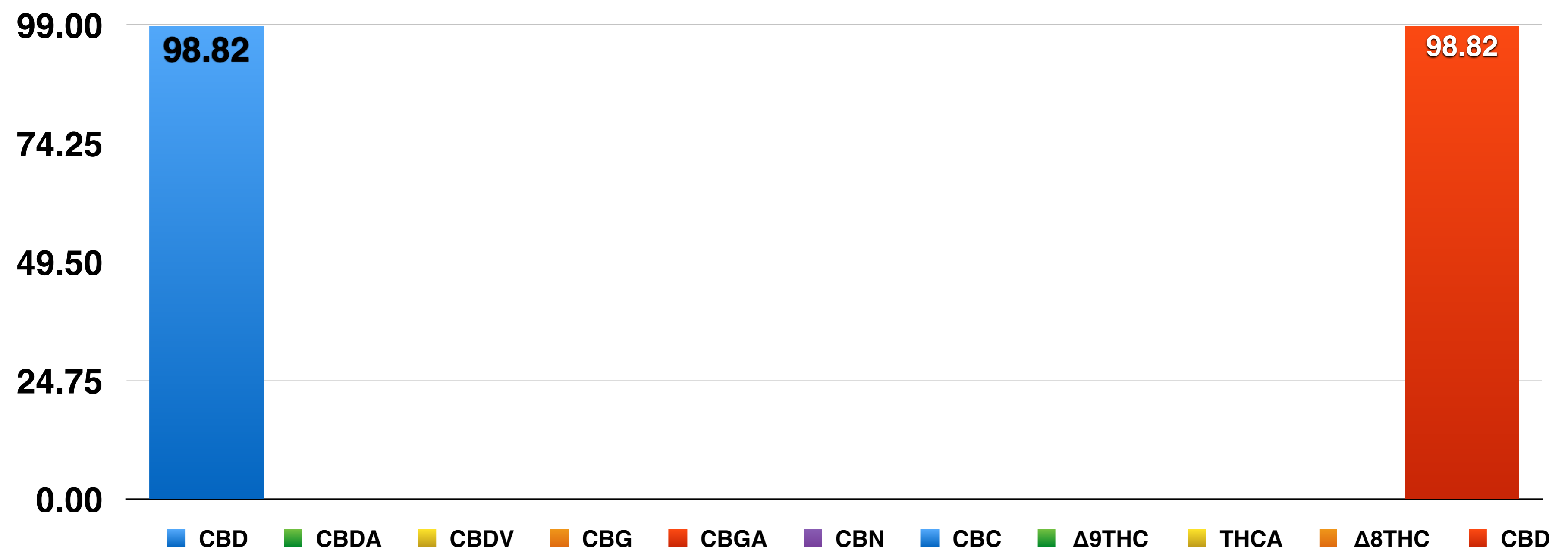
Total CBD 98.82% Cannabinoid Profile:

Component	Mass (%)	Amount (mg/g)
CBD	98.82	988.20
CBDA	<0.01	<0.10
CBDV	<0.01	<0.10
CBG	<0.01	<0.10
CBGA	<0.01	<0.10
CBN	<0.01	<0.10
CBC	<0.01	<0.10
Δ9THC	<0.01	<0.10
THCA	<0.01	<0.10
Δ8THC	<0.01	<0.10
CBD	98.82	988.20

HPLC Chromatogram



Cannabinoids as Percent of Total Mass



Endoca Certificate of Analysis:

Endoca USA
 2305 Historic Decatur Rd San Diego USA
 Phone: +1-619-831-0156
 infousa@endoca.com
 www.endoca.com
 ISO 22000 certified
 HACCP certified; GMP certified

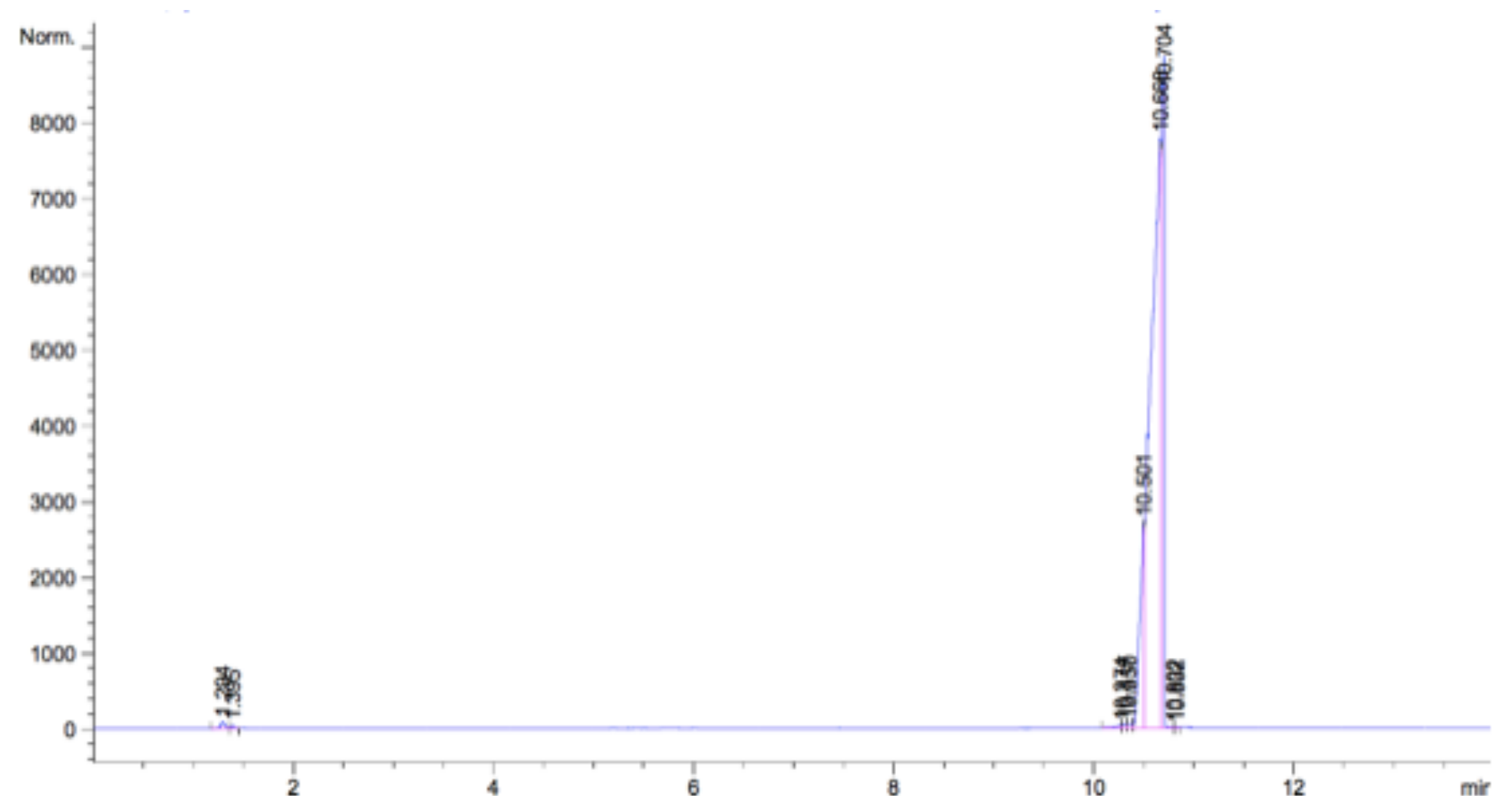
Responsible Supervisor: Martin V.
 Sample: Batch# 1142
 Date samples received: 23-October 2018
 Date analysis began: 23-October 2018
 Date sample report produced: 23-October 2018
 ID Number when available: _____
 Sample Mass: 1 g

Total CBD 98.82%
Terpenoid Profile:

Component	Amount %
β-Caryophyllene	ND
α-Humulene	ND
Caryophyllene oxide	ND
Myrcene	ND
α-Pinene	ND
Terpinolene	ND
Humulene epoxide II	ND
Limonene	ND
β-Pinene	ND
E-β-Ocimene	ND
Sabinene	ND
Linalool	ND

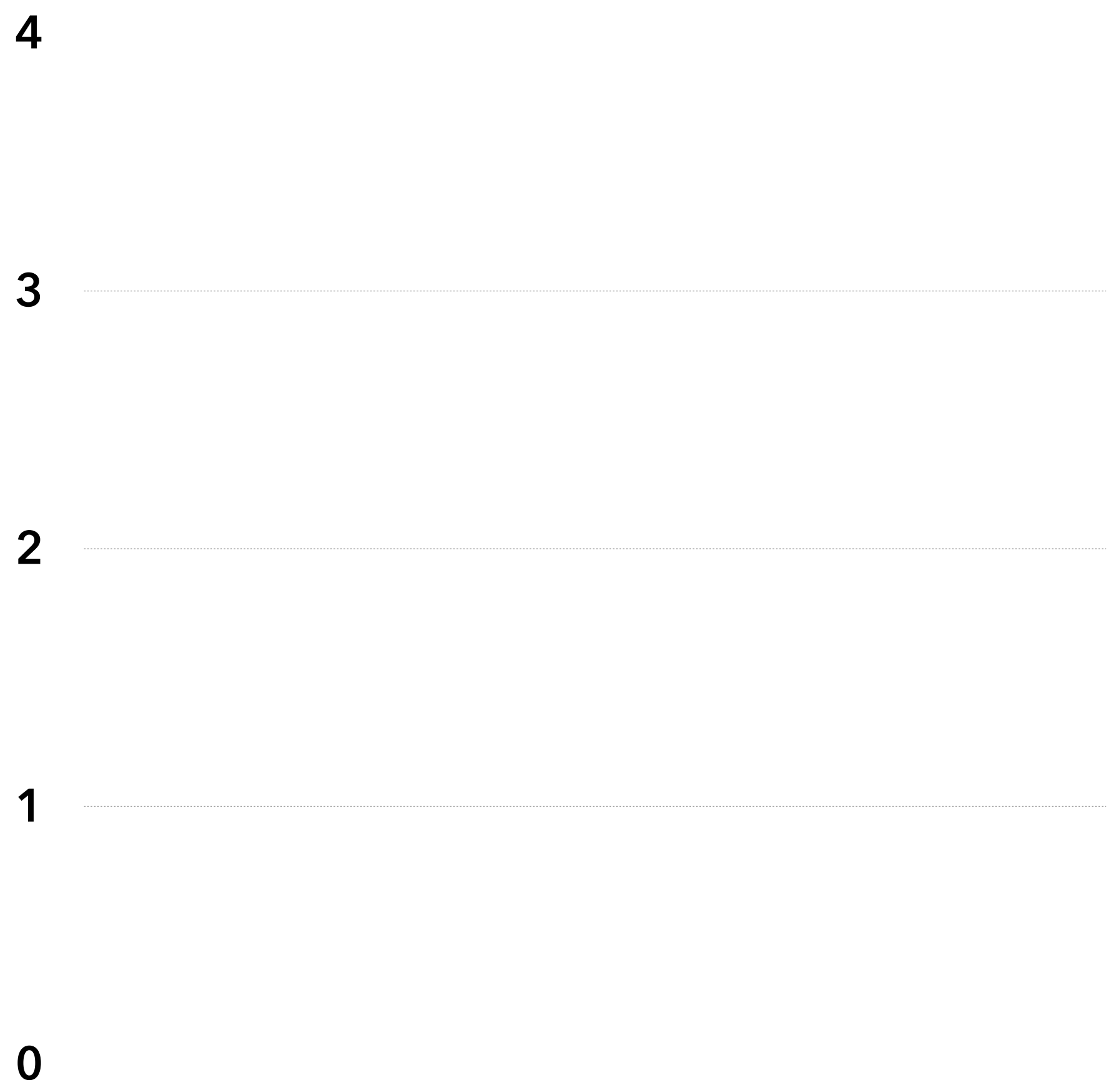
ND - Not Detected

GC-MS Chromatogram



Terpenoid Distribution

- β-Caryophyllene
- α-Humulene
- Caryophyllene oxide
- Myrcene
- α-Pinene
- Terpinolene
- Humulene epoxide II
- Limonene
- β-Pinene
- E-β-Ocimene
- Sabinene
- Linalool



Endoca Certificate of Analysis:

Endoca USA
 2305 Historic Decatur Rd San Diego USA
 Phone: +1-619-831-0156
 infousa@endoca.com
 www.endoca.com
 ISO 22000 certified
 HACCP certified; GMP certified

Responsible Supervisor:	Martin V.
Sample	Batch# 1142
Date samples received:	23-October 2018
Date analysis began:	23-October 2018
Date sample report produced:	23-October 2018
ID Number when available:	
Sample Mass	1 g

Total CBD 98.82%
Microbial Profile:

Component	Results
<i>Listeria m.</i>	1 g ND*
<i>Escherichia c.</i>	1 g ND*
<i>Salmonella</i>	25 g ND*
Yeast	1 g ND*
Mould	1 g ND*

*ND - Not detected

**All Mycotoxins at
 Non Detectable (ND) levels**



Nutrition Facts

Component	%
Moisture and volatile matter content	ND*
Protein content	ND*
Total fat content	ND*
Carbohydrates content	ND*
Total Fiber content	ND*
Total sugars content	ND*
Total ash content	ND*

*ND - Not detected

Endoca Certificate of Analysis:

Endoca USA
 2305 Historic Decatur Rd San Diego USA
 Phone: +1-619-831-0156
 infousa@endoca.com
 www.endoca.com
 ISO 22000 certified
 HACCP certified; GMP certified

Responsible Supervisor: Martin V.
 Sample Batch# 1142
 Date samples received: 23-October 2018
 Date analysis began: 23-October 2018
 Date sample report produced: 23-October 2018
 ID Number when available: _____
 Sample Mass 1 g

Total CBD 98.82% Heavy Metals Profile:

Component	Mass (%)	Amount (ppm)	Limit** (ppm)
Arsenic (As ₂ O ₃)	ND*	< 0.1	< 0.1
Cadmium (Cd)	ND*	< 0.1	< 0.1
Lead (Pb)	ND*	< 0.1	< 0.1
Mercury (Hg)	ND*	< 0.1	< 0.1
Chromium (Cr)	ND*	< 1	< 1
Tin (Sn)	ND*	< 10	< 10

*ND - Not detected, **Codex STAN 193-1995, GB 2762, EC No. 1881/2006, FDA

All Heavy Metals at Non Detectable (ND) levels



Conclusions:

No heavy metal residues detected.

No flammable residues detected.

No chemical residues detected.